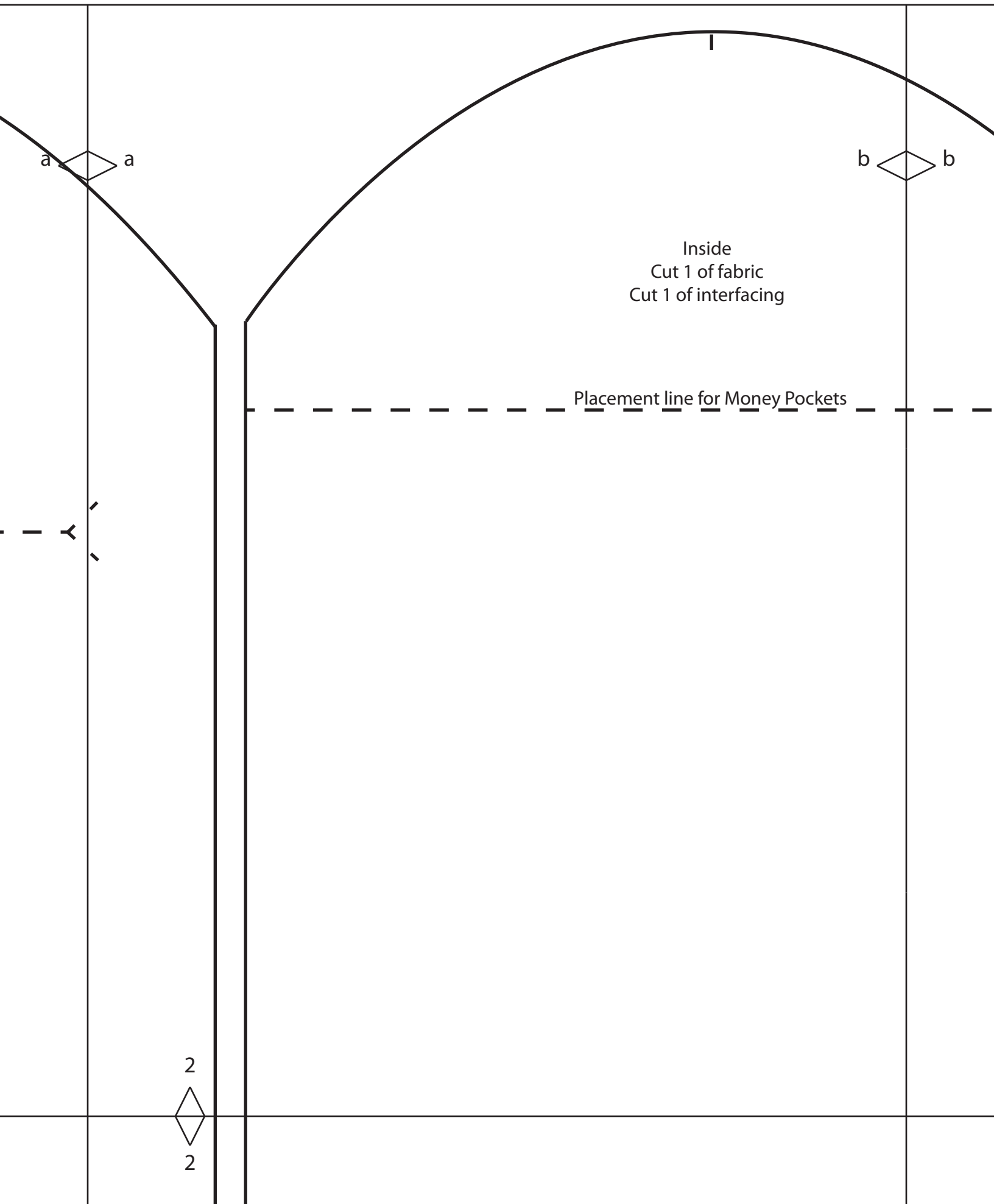


Outside
Cut 1 of fabric
Cut 1 of interfacing

a a

1
1





a a

b b

Inside
Cut 1 of fabric
Cut 1 of interfacing

Placement line for Money Pockets

2



2

Dix

Wallet

Suppli

c 1/4 in

Note:

1. Cut
Fold b

2. Pin
1/8 in

3. Pin
bottom
seam

4. First
side fa
Stitch
Pocke

5. Nex
Upper
correc

6. For
Press,

7. Laye
togeth
on the

8. Mat
lines t

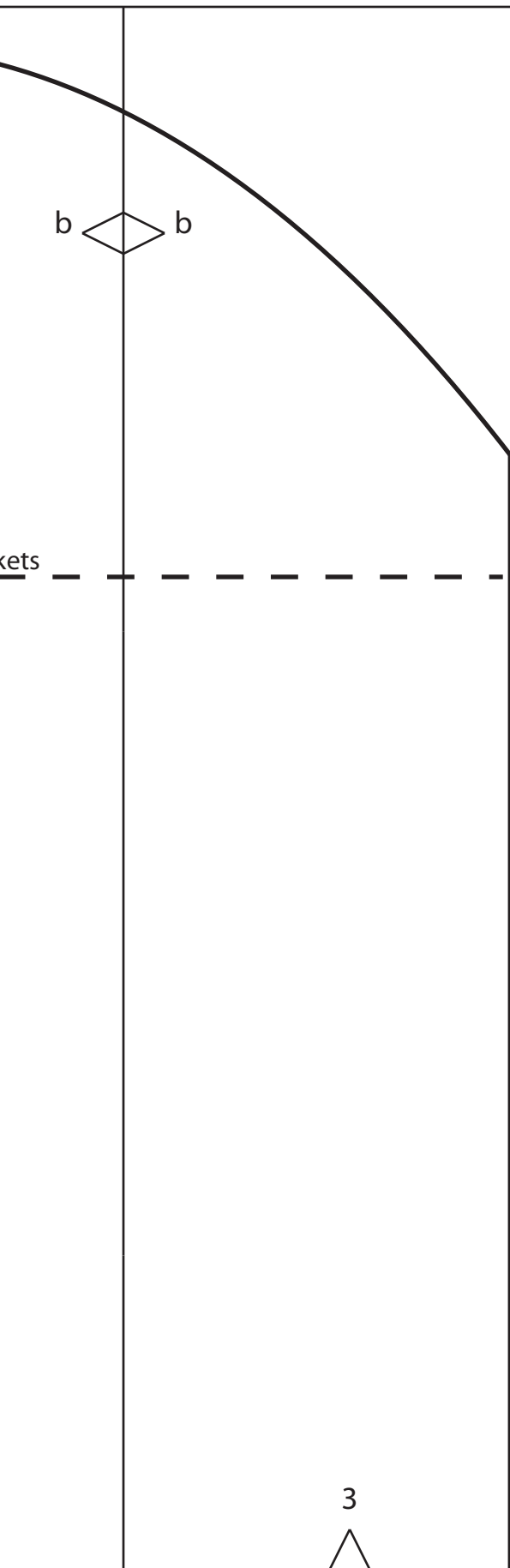
9. On t

10. Ma
Outsid

11. If y
skip to

12. Rig
Turn w

13. Fol



b

c

3

kets

Dixie DIY.com Wallet

Wallet with zippered coin pocket, three card pockets, two money pockets and button closure.

Supplies: 1/3 yd fabric, 7 in zipper, 1 button, matching thread, 1/3 yd fusible interfacing, 1 yd of trim (optional).

C



1/4 in seam allowed unless where noted

Note: Find this project on the Crafts Page on DixieDIY.com for pictures and more detailed instructions.

1. Cut out all pieces and apply interfacing. On the Outside, cut along the dotted line in the center of the piece. Fold back the opening underneath to the wrong side of fabric. This will be where we insert the zippered pocket.
2. Pin the Coin Pocket Lower right side to the zipper wrong side, matching long edge and centering zipper. Stitch 1/8 in seam along the edge.
3. Pin the Coin Pocket Upper right side to the zipper wrong side matching the Coin Pocket Upper top edge to the bottom edge of the zipper and centering zipper. Stitch 1/8 in seam along the edge. Pull back fabric and press seam so that zipper is flat.
4. First, make sure the zipper is facing up and the two fabric pieces are separated from each other and fabric right side facing down. Center the cut opening of the Outside on top of the zipper and pin the opening to the zipper. Stitch close to the opening edge along the bottom edge of the zipper (so you will stitch outside, zipper and Coin Pocket Upper together).
5. Next fold the Coin Pocket Lower back down so that the bottom and side edges match with the Coin Pocket Upper. Stitch close to the Outside opening edge along the sides and top of zipper. You'll know you've done this correctly if you haven't sewn the pocket shut!
6. For the interior pockets fold under the top edges (the sides that will be open to slip money/cards into) 1/4 in. Press, fold under again 1/4 in and topstitch.
7. Layer the Money Pockets over each other, right sides facing up with bottom edges matching. With them together, fold under 1/4 in. Press, fold under again 1/4 in. Place the pockets' bottom edge along the dotted line on the Inside. Pin and topstitch.
8. Match the bottom edge of the Card Pocket to the straight edge of the Inside. Pin and topstitch along dotted lines to create dividers.
9. On the Outside, attach button over the small circle.
10. Make a loop out of a piece of trim or ribbon long enough to fit around the button. Place the loop on the Outside with the raw edges matching the raw edge of the fabric, pin
11. If you want to include trim or piping around the outer edge of the wallet, now is the time to do that. If not, skip to #12. Place trim along seam line of long and curved edges of the Outside (right side facing up). Stitch.
12. Right sides facing pin Outside and Inside together matching raw edges. Stitch around long and curved edges. Turn wallet right side out.
13. Fold under the opening of the bottom of the wallet 1/4 in. Press with iron and top stitch closed.

4



4



Card Pocket
Cut 1 of Fabric
Cut 1 of Interfacing



Coin Pocket Lower
Cut 1 of Fabric



2



2



d



d

e



e



Money Pocket Lower
Cut 1 of Fabric
Cut 1 of Interfacing



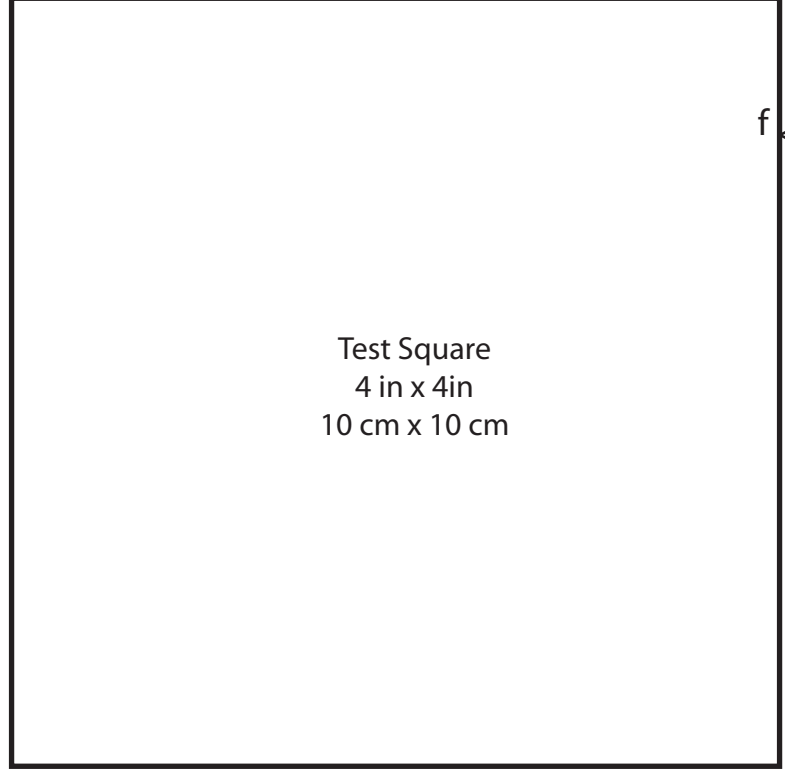
Coin Pocket Upper
Cut 1 of Fabric



3
3

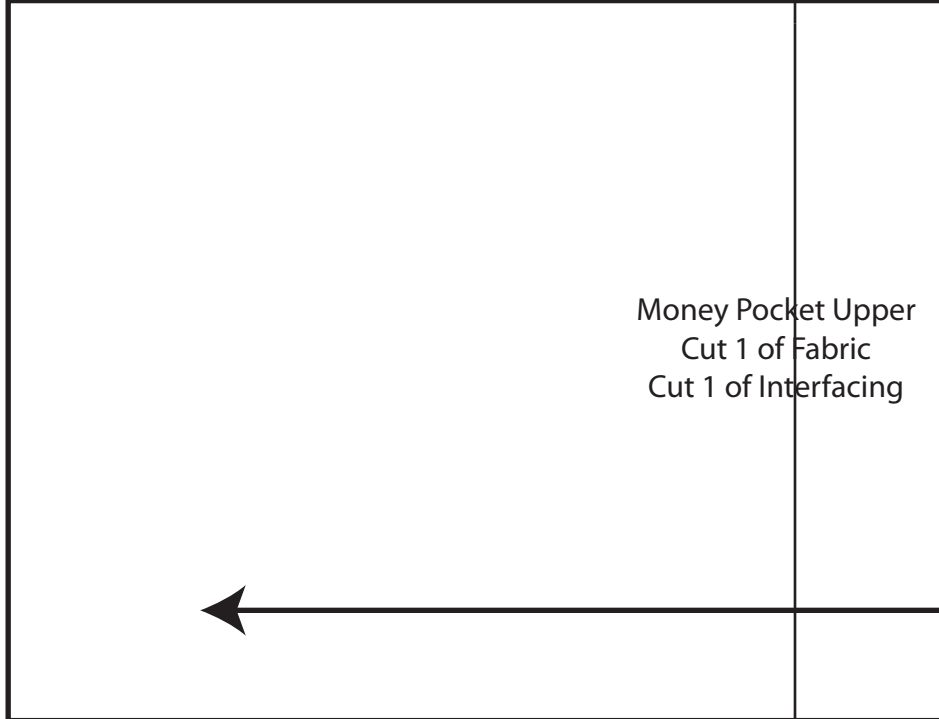


e e



Test Square
4 in x 4in
10 cm x 10 cm

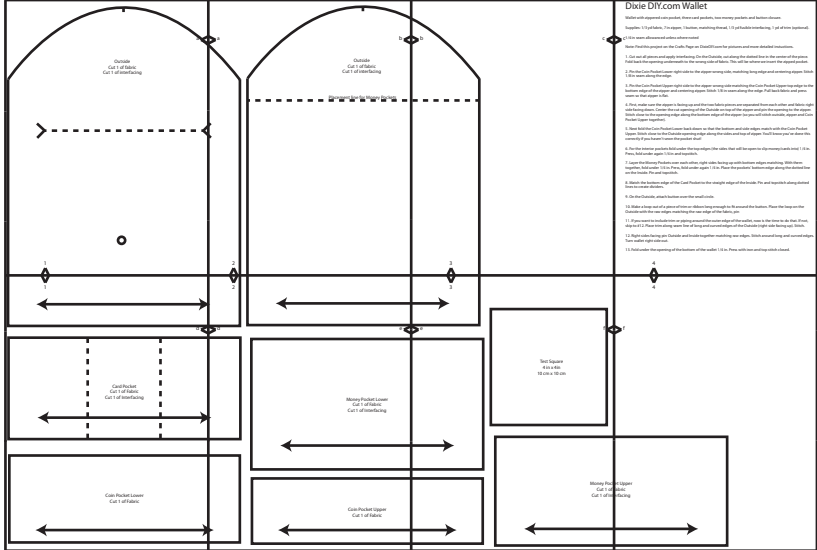
f f



Money Pocket Upper
Cut 1 of Fabric
Cut 1 of Interfacing



4
4



f

Money Pocket Upper
Cut 1 of Fabric
Cut 1 of Interfacing

